

August 12, 2013



# WINGTIPS

Friends of the Migratory Bird/Duck Stamp

## Save the Date for Next Month's Art Contest

The upcoming annual Federal Duck Stamp Art Competition will take place at [Maumee Bay State Park Conference Center](#) in northwest Ohio on September 27-28. The winning art will grace the 2014-15 stamp, replacing the artwork on the current stamp chosen at last year's contest. That artwork, with a male Common Goldeneye, painted by Bob Steiner, is shown on the stamp below.

There are a few very special reasons to hold this upcoming annual contest in northwest Ohio this year.



The choice pays homage to long-time Fish and Wildlife Service employee and acclaimed wildlife artist Bob Hines, from Ohio. Hines, the artist for the 1946-1947 Duck Stamp, worked for the Ohio Division of Wildlife as a staff artist for a decade before becoming the

official artist for the U.S. Fish and Wildlife Service from 1948 to 1980. Hines dedicated his life and artistic work to the conservation of our valuable resources.

The location highlights the excellent relationship between the USFWS and the state agency, the Ohio Department of Natural Resources (ODNR). The Maumee Bay State Park Conference Center is even an ODNR facility.

Next, there is the regional habitat. "The quality marshes and wetlands along the shores of Lake Erie make the choice of northwest Ohio a great venue for the Federal Duck Stamp Contest," says Scott Zody, Chief, ODNR Division of Wildlife. "In addition to great natural resources, the region boasts some of the most dedicated and passionate waterfowl conservationists

## In This Newsletter Issue

[SAVE THE DATE IN SEPTEMBER](#)

[A BINOCULAR CONNECTION](#)

[SOME RECENT NEWS](#)

[WHERE STAMP DOLLARS GO](#)

[ABOUT THE FRIENDS](#)

## Quick Links

[Our Website](#)

[About Us](#)

[Resources](#)

## Did You Know?

- 1) The 1935-36 stamp, one showing flying Canvasbacks, was the first to show a duck blind. Interestingly, this feature was not in the original art for the stamp. It was added by the engraver at the Bureau of Engraving and Printing, which until about a decade ago hand-engraved the plate for each stamp.
- 2) The first "certificates of appreciation" were sent to post-season purchasers of the 1959-1960 Stamp. This was to reward buyers who bought the stamp after the hunting season was over and at a time when severe droughts were devastating duck populations. The certificate was 5"x 7", printed in black and white

in the Midwest."

The contest location is also appropriate because of its close proximity to the Ottawa National Wildlife Refuge, about 15 miles away on the shore of Lake Erie. This refuge was established in 1961 to provide habitat for migratory birds, resident wildlife, and endangered and threatened species. Over 86 percent of Ottawa Refuge has been acquired through investment of the Migratory Bird Hunting and Conservation [Duck] Stamp.

Viewing the submitted artwork - of Mallard, Canvasback, Gadwall, Cinnamon Teal, and Blue-winged Teal - and viewing the judging process is free and open to the public.

You can find out more on the contest [here](#).

on imitation parchment.  
3) Scoters may be the "Rodney Dangerfields of Duck Stamps," getting no respect. The three species of scoters have appeared on stamps, but only one time each: 1969-70 (White-winged Scoter by Maynard Reese), 1996-97 (Surf Scoter by Wilhelm Goebel), and finally 2002-03 (Black Scoter by Joseph Hautman). In the last case, all the artists in the 2001 contest had to illustrate Black Scoter!  
4) In 1967 there were 184 art entries submitted to the art competition; in 1997 there were 380.

### An Important Binocular Connection

Last month, Carl Zeiss Optics, announced that though September 11, it would offer a free Federal Duck Stamp (and holder) to anyone who bought one of its "Conquest HD" binoculars. This is a creative challenge to other outdoor companies, and a substantial way to support the stamp program.

This is not the first time that optics companies have promoted the stamp. In 2007, Steiner Binoculars made a similar kind of offer for a free stamp (also in a holder) for buyers of the "Peregrine" or "Merlin" products. Eagle Optics has also promoted the stamp as an effective way to save wetland and grassland habitats by distributing plastic holders so that the stamps could be displayed hanging on binocular straps.

Mike Jensen, President of Carl Zeiss Sports Optics, said of the company's current and creative offer, "Zeiss wanted to offer a tangible benefit to our customers and one that has a lasting effect. The Federal Duck Stamp program has been called one of the most effective conservation programs ever initiated... [This] is our way of supporting wetlands habitat conservation and encouraging people to visit the National Wildlife Refuge System."

More details on the consumer mail-in rebate from Zeiss can be found [here](#).

### Some Recent News About the Stamp and Stamp-support

Starting very soon, *Wingtips* will begin a regular profile a National Wildlife Refuge or Waterfowl Management District that has benefited from Stamp/MBCF funding. It may not appear in every issue, but the premier article should appear soon. If you have a candidate location, please [contact us](#).

Also in a future issue of *Wingtips* we will describe the three sources for the Migratory Bird Conservation Fund (MBCF) and four important ways to build the Fund.

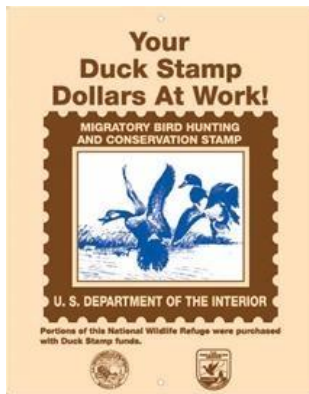
Our Facebook for the Friends of the Migratory Bird/Duck Stamp is growing. Perhaps it's time for you to [get on board](#).

More activities to help grow support for the stamp are included on our Friends website, starting [here](#).

Next month's art contest, described in the article above, is scheduled to be livestreamed. The details may not be there now, but there will be broadcast information shortly, to be found [here](#).

The next meeting of the Migratory Bird Conservation Commission (MBCC) is tentatively scheduled for Thursday, September 12. The Commission will make decisions on where the next cycle of MBCF investments will go to secure National Wildlife Refuge System habitat. For more details on the functioning of the MBCC and the MBCF, see our short description below.

## Where Do Stamp Dollars Go?



The money from the sales of the Migratory Bird Hunting and Conservation Stamp is deposited into the Migratory Bird Conservation Fund (MBCF) dollars. The MBCF is where stamp dollars are held prior to investment for National Wildlife Refuge System property decided upon by the Migratory Bird Conservation Commission (MBCC).

Last year, over \$55.5 million was available for investment (for fee-title and easements) from the MBCF.

You can access an invaluable listing of every National Wildlife Refuge that has received funding through Stamp dollars [here](#). This involves 252 refuges in the lower 48 states. From this list you can also find the actual percentage of property paid for by Migratory Bird Conservation

Fund dollars, where Stamp funds are held.

Also, the Cornell Lab of Ornithology developed a highly informative map to show the same sort of information. We placed it on our Friends website, and it's found [here](#).

## About the Friends of the Migratory Bird/Duck Stamp



Our Friends Group is an independent, nonprofit organization dedicated to two basic goals:

1. To increase promotional and educational efforts among various target audiences concerning the stamp and the National Wildlife Refuge system.
2. To increase the regular, voluntary purchase of the stamp among hunters and non-hunters alike.

The purchase of a stamp is, perhaps, the easiest thing you can do to protect crucial wetland and grassland habitat in the U.S.

Moreover, buying a stamp is not something that will just benefit ducks. Among the many other bird species, there are shorebirds, long-legged waders, and wetland and grassland songbirds that are dependent on habitats derived from Stamp purchases.

And it's not only birds that benefit from the stamp! Reptiles, amphibians, fish, butterflies, all flourish through Stamp investments. Water quality is also strengthened.

A 15-dollar purchase of a stamp goes a very long way!

Our "Regular Friend" fee is modest, equal to the cost of one current Stamp (\$15), but all Friends are also asked to pledge to buy *two* stamps per year, joining with other individuals and organizations across the country with that promotional effort. Our "Friend's Year" also corresponds with the "year" of a valid Stamp - from July to July. It's time to make that contribution!

You can also become a "Supporting Friend" by contributing \$100 or more.

**[Become a Friend Today!](#)**